



2025 DESIGN DIGEST

ACCESSA'S ANNUAL GO-TO
COLLECTION OF QUALITY
INTERIOR DESIGN TRENDS





**QUALITY
CHOICES TO
OUR CORE**

INTRODUCTION

Making design decisions is fun and exciting, but with so many paint color options and shifting styles to choose from, it can also be daunting.

With a focus on trends in color and coatings, Accessa publishes our Design Digest each year to capture only the design trends that we predict will be relevant and valuable for our customers. On the following pages, you'll find bona fide trends – not fads that will look dated

in a matter of months. We are Accessa. Staying power is part of how we define a quality choice in design.

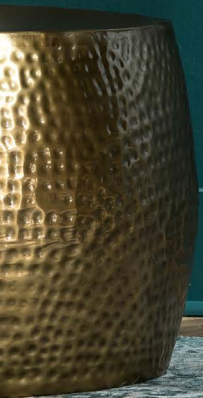
The 2025 Design Digest is one way Accessa demonstrates our commitment to offering customers quality choices. Trust our team to help you bring these trends to life with expert color mixing, application expertise and the high-quality products and tools you need to do the job right.



Joe Todd,
President/Principal



Vince Todd, Jr.,
Vice President/Principal





TOP COLORS SHAPING INTERIOR DESIGN IN 2025



1stDibs

1st place: Warm chocolate brown
2nd place: Emerald green
3rd place: Dark red and burgundy

Nearly 650 interior designers worldwide participated in 1stDibs' eighth annual Interior Designer Trends Survey. When asked for their top choice for the most popular color of 2025, these three topped the list. 1stDibs is the leading marketplace for extraordinary design.

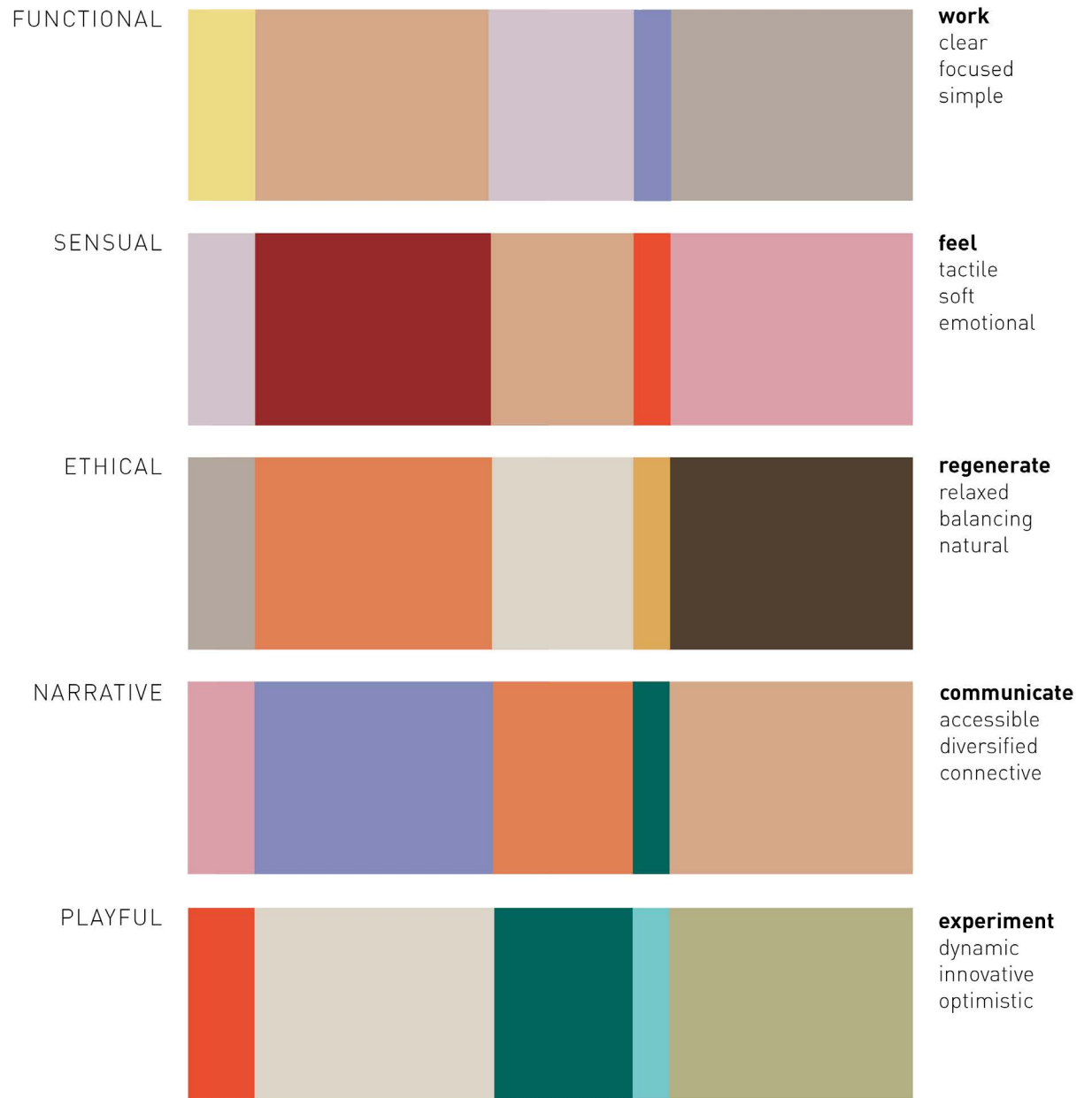


Photos: Brown by Lord Decor, red by Decorilla, green by Mylands

RAL

As a global leader in color trends for design, architecture, industry, trade and retail, RAL offers its COLOUR FEELING 2025+. RAL's 15 selected colors can be used as a basis for responding to current issues, motivating change, creating project-oriented design or building resonant relationships with the environment.

For information about how to mix and match the colors, [click here](#).



INTERACTION OF COLOUR & ATMOSPHERE



Paint & Coatings Industry (PCI)

Our peers at Paint & Coatings Industry featured a roundup of 2025 colors of the year. “These selections ... reflect deeper shifts in consumer behavior, global influences, and the evolving ways people live and design their spaces,” says Courtney Bassett, Managing Editor of Paint & Coatings Industry Magazine. The 2025 selections present a mix of bold expression and grounded comfort. Read [“Coatings Companies Release 2025 Color Trends”](#) at [pcimag.com](#).

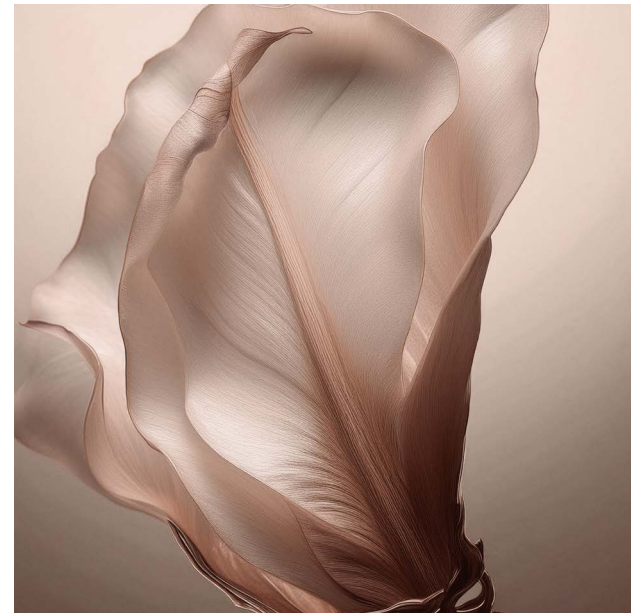
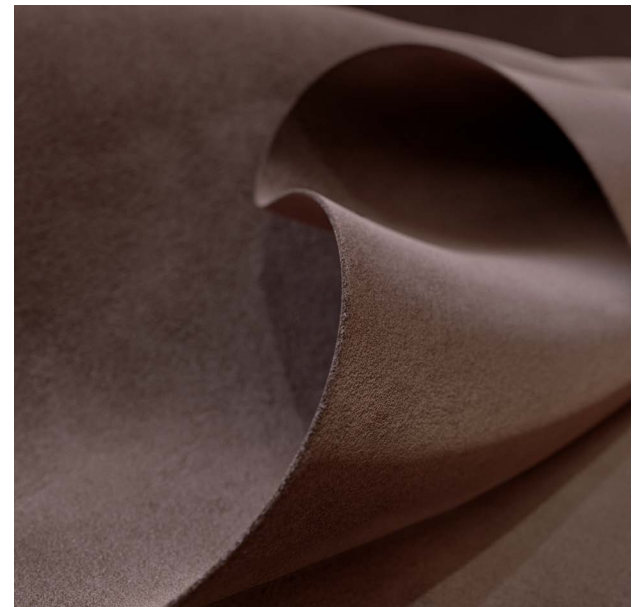




PPG | Glidden

Purple Basil

PPG's Purple Basil blends warmth and energy, inviting you to embrace the transformative power of color in your space. While clearly a natural hue, Purple Basil can seem ultra rare depending on the finish – making it something altogether different and extraordinary.



Pantone



PANTONE®
17-1230 TCX
Mocha Mousse

For 2025, the Pantone Color Institute selected PANTONE 17-1230 Mocha Mousse, a warming, brown hue imbued with richness. It nurtures us with its suggestion of

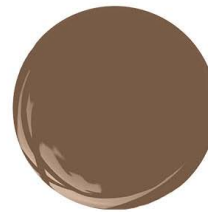
the delectable qualities of chocolate and coffee, answering our desire for comfort. Mocha Mousse can stand alone or serve as a versatile foundation, enhancing a wide range of palettes and applications—from minimalist to richly detailed designs—across all color-focused industries.





AcromaPro & ICA

After 15 years of annual Color of the Year announcements, Sherwin-Williams (SW), parent company of AcromaPro and ICA, combed its collections to curate the 2025 Color Capsule of the Year. This expertly selected assortment of hues encapsulates the world of color at its most classic and cutting-edge so that anyone can use it to tell a uniquely beautiful and authentic color story. (All SW colors are available from Accessa in AcromaPro and ICA coatings.)



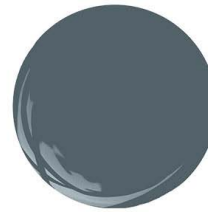
Grounded
SW 6089



Sunbleached
SW 9585



Chartreuse
SW 0073



Rain Cloud
SW 9639



Clove
SW 9605



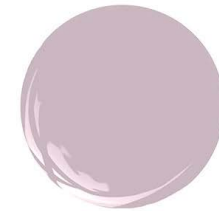
Malabar
SW 9110



Bosc Pear
SW 6390



White Snow
SW 9541



Mauve Finery
SW 6282

Mylands

2025 Colour Palette

Mylands introduces its 2025 colour palette in collaboration with colour creative agency Etté. Titled An Artist's Palette, the curation represents a quiet revolution in colour within the home, taking inspiration from the earthy and honest tones championed by the Bloomsbury Group as well as contemporary hues found in the worlds of art, fashion and design.

Clockwise from top left: Long Acre, Messel, Indian Lake, Sorrel Green, Soho Pink, Huguenot.







Benjamin Moore

Cinnamon Slate

A delicate mix of heathered plum and velvety brown, Benjamin Moore's Cinnamon Slate (2113-40) is a nuanced color that brings a smooth familiarity to any design.

Benjamin Moore's Color Trends 2025 Palette

Discover the beauty in undertones and the possibilities they can bring to a design. This palette of foundational colors transitions gracefully from room to room. Paired together in a room or throughout the whole home, these thoughtful hues exude warmth, comfort, and a sense of ease.



Chowning's Tan
CW-195



Cinnamon Slate
2113-40



Glacier White
OC-37



Stained Glass
CSP-685



Paris Rain
1501



Tissue Pink
1163



Rosepine
461



Ashwood Moss
1484



Sea Salt
CSP-65



Leather Saddle Brown
2100-20



Behr

Rumors

Behr Paint's 2025 Color of the Year is Rumors, a deep, dynamic ruby red that empowers DIYers, designers and paint professionals to create impactful color moments. About 75% of Americans say they would consider painting a room or wall a shade of red, and Rumors is the perfect choice with its unique balance of warmth and vitality.









Valspar

Encore

Valspar Encore (8002-45G) has saturation and a tinge of violet that bridges both digital and physical spaces. Using crisp, cool shades in the home mimics the mood in virtual space. Low lighting will amplify the violet undertone that helps ease our eyes back into reality.



2025 INTERIOR DESIGN TRENDS TO KNOW

RATIO Commercial Interior Design

“Good design and details aren’t going anywhere,” says Sim Nabors, a Principal and the Director of Interior Design at global design studio RATIO. Trends, on the other hand, aren’t as predictable. *“Trends are interrupters.”*

Nabors and Emily Robinson, a Senior Associate in Interior Design at RATIO, live and breathe design for various commercial applications, including higher education, cultural centers, workplaces, sports venues and life sciences. They shared their thoughts on 2025 trends with Accessa.



RATIO: Commercial Interior Design

Maximalist Everything

Look no further than The Lafayette Hotel San Diego as inspiration for the movement toward a maximalist aesthetic.

For Accessa customers, this visual overload might materialize as custom metalwork, light fixtures and even metal statuary in a variety of finishes set against tile or parquet floors, custom wallpaper and animal prints. For customers averse to form over function, never fear.

“Clean design isn’t going anywhere. It’s just not trending,” Robinson says.







Kayhan



RATIO: Commercial Interior Design

Experiments in Coating

Companies today are experimenting more frequently with color, knowing they can switch it up later without too much expense. Grayed-out jewel tones — muted reds, greens and blues — in a matte finish will have staying power through at least the rest of the year.

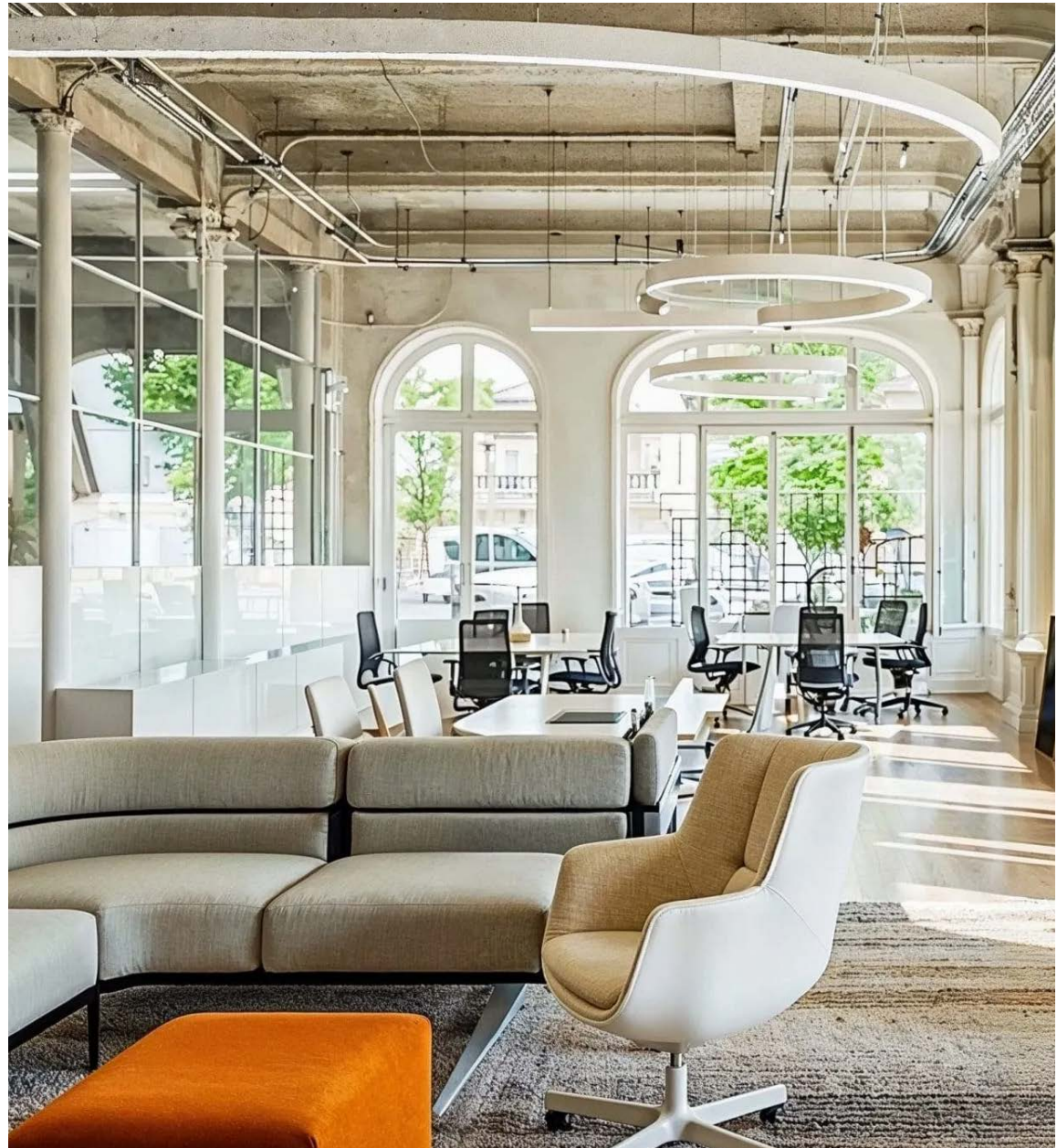
RATIO: Commercial Interior Design

Workspaces That Don't Feel Like Work

Post-pandemic, employers are leaning on design to help them lure employees back to the office with a movement toward fun, engagement and surprise.

"If there is a blank wall, clients want something on the wall," Robinson says. "Everything must be touched."

Some such headquarters are taking cues from comfy residential spaces with their feminine shapes and warm hues, and the hospitality industry's revived affection for eye candy.



Decorilla



Cabinetry Trends

MASTERBRAND 2025 FINISHES OF THE YEAR: LIGHT COASTLINE (PICTURED) AND DARK CURRANT

NATURAL & DARK WOOD TONES

BRIGHT PAINT

MODERNIZED SHAKER STYLES

Opposite Page: House Beautiful, House Beautiful, Real Simple





Details & Extras

STORAGE DINING FURNITURE

WIDER ENTRY SPACES
FEATURING PIVOT AND
DOUBLE ENTRY DOORS

THREE-SIDED SEATING

COLOR AND MATERIAL
DRENCHING (PHOTO PAGE 2)





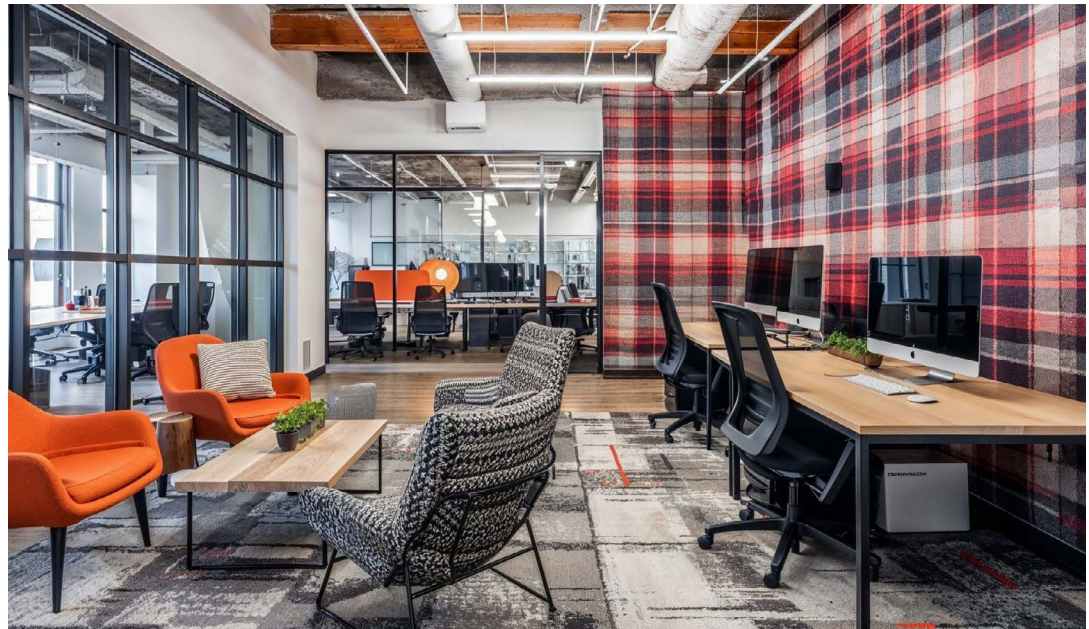
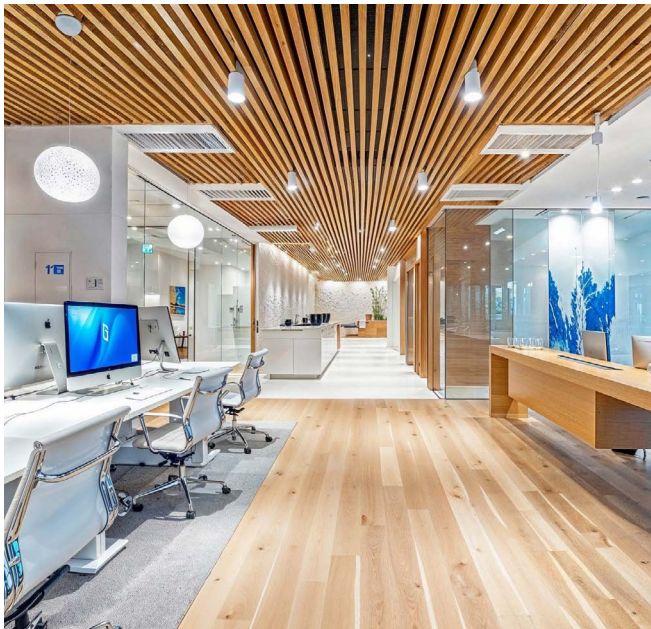
Office

ULTRAMODERN DESIGN

RESIMERCIAL DESIGN
COMBINING COMFORT
AND FUNCTIONALITY

Photos: Decorilla







Put these trends
to work for you
to **sharpen your
competitive edge.**

Contact Accessa for the
latest finishing products,
innovations, and cross-brand
technical assistance.

800.593.0126

[accessa.com](https://www.accessa.com)

